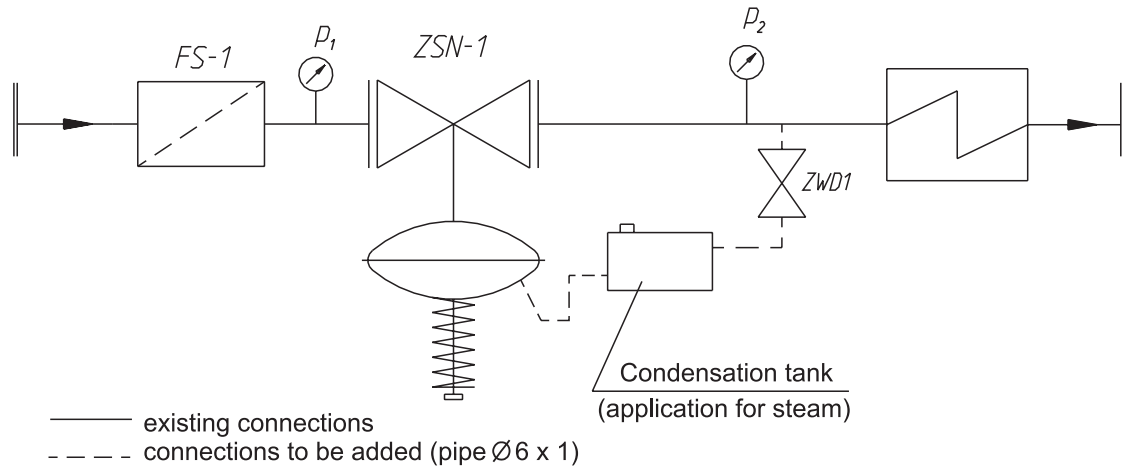


INSTALLATION

Regulator is to be installed on horizontal pipeline. Medium flow direction is to conform to arrow on body. At medium temperature lower than 130°C regulator position is optional, at higher temperatures it is recommended to install regulator with adjuster unit (03) down. To ensure reliable operation of regulator apply strainer FS1 upstream, and needle valve ZWD 1 at impulse supply. When using regulators for steam applications condensation tank is required.

EXAMPLE OF APPLICATION



ACCESSORIES

Delivered:

- nut and cutting ring for impulse tube,

Optional (ordered separately):

- strainer FS1,
- straight tube connection Ø 6×1,
- elbow tube connection Ø 6×1,
- connection stub NPT 1/4"
- impulse tube Ø 6×1,
- adjustment wrench,
- condensation tank,
- needle valve ZWD 1.

ORDERING

In your order specify type and marking, ZSN 1.1 or ZSN 1.2, DN nominal diameter, flow ratio K_{vs} , body material, spring range, tightness type (only orders for tight execution).

Example of order:

ZSN 1.2 - DN 40; PN 25; Kvs 20; spheroidal iron; 100...400 kPa; tight.